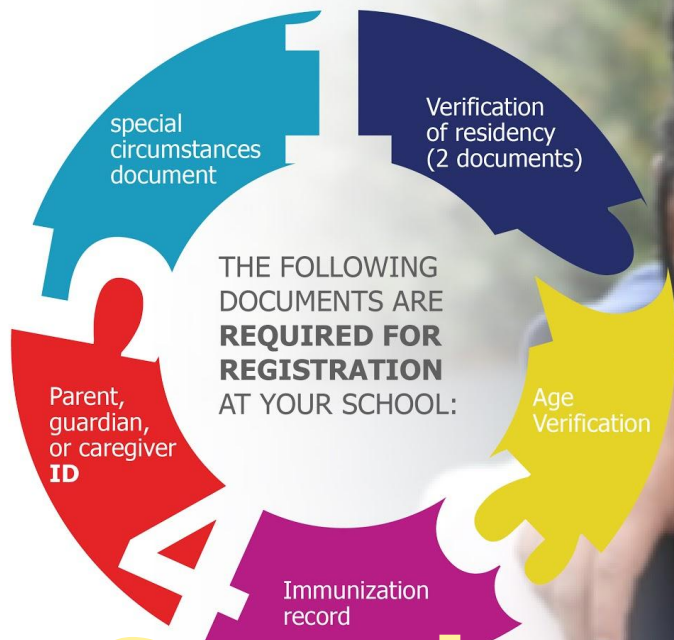


NEW FAMILY ENROLLMENT 2021-22 begins January 19

Including TK & Kindergarten Registration



Visit www.wccusd.net/enrollment2021-2022 for more information on how to register.

Superintendent's Report

January 13, 2021

STUDENT ENROLLMENT IS ON A FIRST-COME, FIRST-SERVED BASIS. APPLICATION APPLICATION.

Recent Events

- Early Literacy Block Grant (acceptance tonight)
- Dashboard Development about Safety and Return to School in conjunction with UTR
- Facilitron Entry Procedures to our facilities that are open using QR codes for scanning
- Survey about “return to physical school” still open through Friday
- COVID cases spiking within our staff
- Positive Increase in Lunch Form Completions thanks to much hard work
- Positive News in the Governor’s Budget

NEW FAMILY ENROLLMENT 2021-22 begins January 19

Including TK & Kindergarten Registration



Visit www.wccusd.net/enrollment2021-2022 for more information on how to register.

STUDENT PLACEMENT IS ON A **FIRST COME FIRST SERVED BASIS** UPON SUBMITTING A COMPLETE REGISTRATION APPLICATION.

Upcoming/Next

- **Planning for Summer 2021-Robust Offerings**
- **Finalizing Community Survey about Return to school**
- **Study Session on Current COVID Conditions next Wednesday January 20 and February 3rd. Both start times are at 5:30 pm.**
- **Working with County Health about coming Immunization plan**
- **Next Regular Board Meeting is January 27th**
- **Martin Luther King Day and Celebrations Next Week.**

INSCRIPCIÓN PARA NUEVAS FAMILIAS

2021-22 inicia el día 19 de enero, 2021

Incluye Inscripción para Kinder Transicional y Kinder



Para recibir más información en cómo inscribirse visite la página de internet www.wccusd.net/enrollment2021-2022

La colocación de los estudiantes se realiza por orden de llegada al presentar una solicitud de registro completa